



Vibro Motors

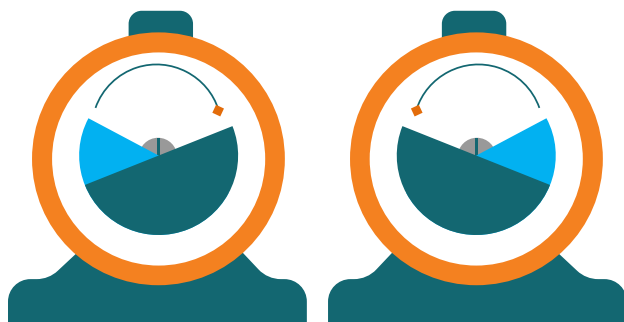
Specially designed for
Stone Crushers and
Mineral Processing Industry

Economy
Efficiency
Endurance

Advantages

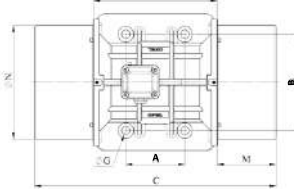
Features	Benefits
Well engineered design and manufactured as per international standards with advanced machineries.	Easy to install & maintain . Ideal choice for dust prone Stone crusher applications .
Cylindrical Roller bearings of reputed brands with high factor of safety.	Assured reliability and well proven to withstand severe vibration.
Extra Heavy duty Motor with rugged design. Vacuum impregnated Copper coils.	It can withstand surge loads and adverse electrical conditions.
Body is made of high grade precision machined castings.	Can handle extreme cyclic loads without fatigue failure. Consistent performance for year with minimal internal wear.
User friendly and step-less eccentric weights adjustments.	Can be set for the precise amplitude requirement. Ensure optimum vibration with reduced equipment wear & fatigue.
Available in wide range of design to suit every application.	Well suited for applications like – Stone crushers, Aggregates industry, Mining, Cement, Power , Paper, Foundry & Steel plants.

**Easily
Inter-changeable
with other Make
Vibro motors**

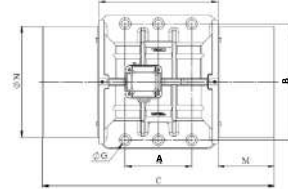


Specification

Dr.: A
(4 Bolt Mounting)



Dr.:B
(6 Bolt Mounting)

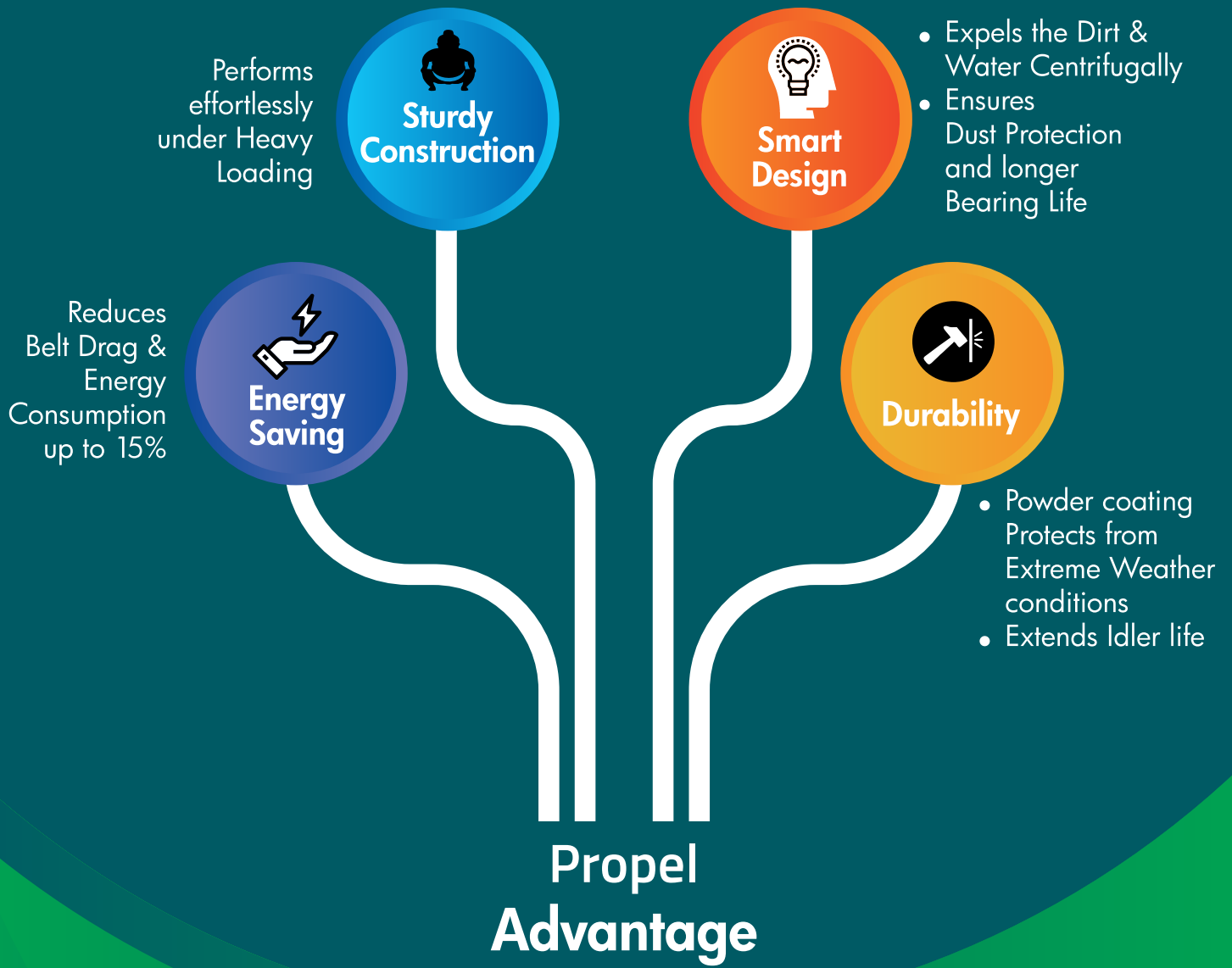


960 RPM- 6 Pole

Model No	Power (kw)	Centrifugal Force (Kg)	Working Moment (kg/cm)	Current (A)	Motor Connection	Mounting Dimensions		
						Ref. Drg.	A	B
OVM 1070/6P	0.7	1070	191	1.4	Y	A	140	190
OVM 1700/6P	0.9	1700	303	1.8	Y	A	140	190
OVM 1720/6P	0.9	1720	307	2.4	Y	A	155	225
OVM 2150/6P	1.5	2150	383	3	Y	A	155	225
OVM 2490/6P	1.9	2490	445	4.1	Y	A	155	255
OVM 3120/6PA	2.3	3120	558	4.5	Y	A	170	270
OVM 3120/6P	2.5	3120	558	4.5	Y	A	155	255
OVM 3800/6P	2.5	3800	680	5.5	Y	A	180	280
OVM 4860/6P	3.2	4860	368	6.5	Y	A	180	280
OVM 6820/6PB	4	6820	1220	7.7	Y	B	236	280
OVM 6820/6P	4.3	6820	1220	7.7	Y	A	200	320
OVM 6820/6PA	4.5	6820	1220	7.7	Y	B	248	305
OVM 8480/6P	5.5	8480	1517	12.6	Δ	A	200	320
OVM 9280/6P	6.2	9280	1659	13.2	Δ	A	200	320
OVM 9280/6PA	6.6	9280	1659	13.2	Δ	B	235	394

1440 RPM - 4 Pole

Model No	Power (kw)	Centrifugal Force (Kg)	Working Moment (kg/cm)	Current (A)	Motor Connection	Mounting Dimensions		
						Ref. Drg.	A	B
OVM 1685/4P	1.1	1685	134	1.4	Y	A	140	190
OVM 1685/4PA	1.3	1685	134	1.4	Y	A	160	210
OVM 2400/4P	1.4	2400	191	1.8	Y	A	140	190
OVM 2900/4P	1.7	2900	230	2.4	Y	A	155	225
OVM 3375/4P	1.9	3375	268	3	Y	A	155	225
OVM 3900/4P	2.2	3900	310	4.1	Y	A	155	255
OVM 4400/4P	2.5	4400	349	4.5	Y	A	155	255
OVM 5400/4P	3.6	5400	429	5.5	Y	A	180	280
OVM 7080/4P	4	7080	564	7.7	Δ	A	200	320
OVM 7100/4P	6	7100	564	12.6	Δ	A	200	320
OVM 9450/4P	7.3	9450	751	13.2	Δ	A	200	320



PROPEL DRIVE SYSTEMS LLP

43/1A, Trichy Main Road, Kangayampalayam, Sulur, Coimbatore – 641 401, India.

+91 98946 20001 | sales@propeldrives.com